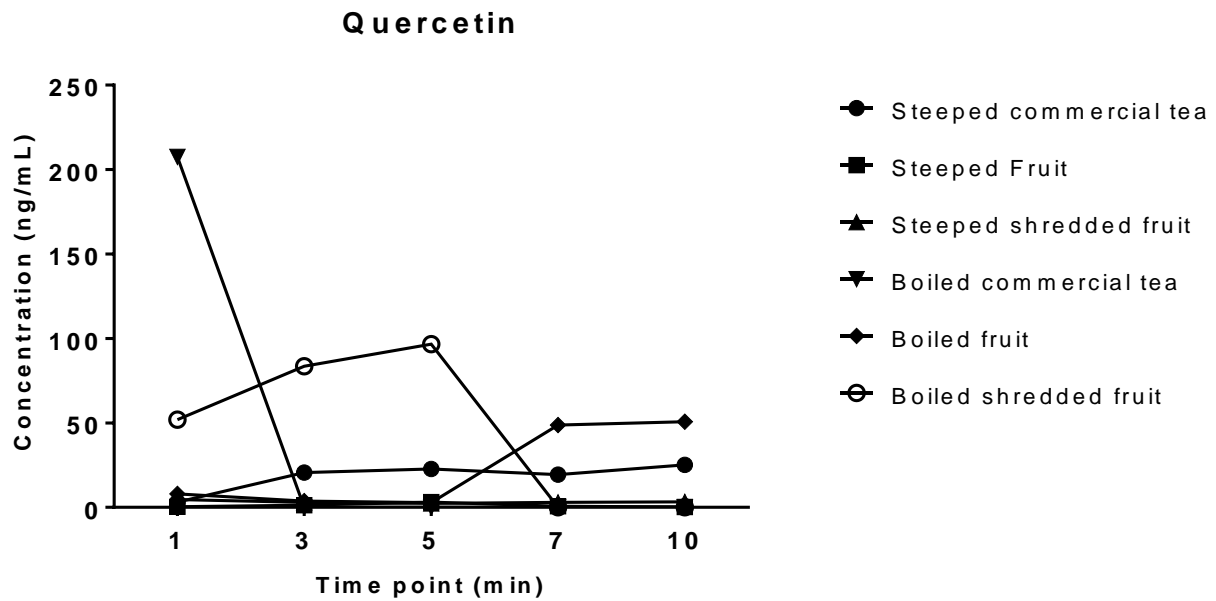
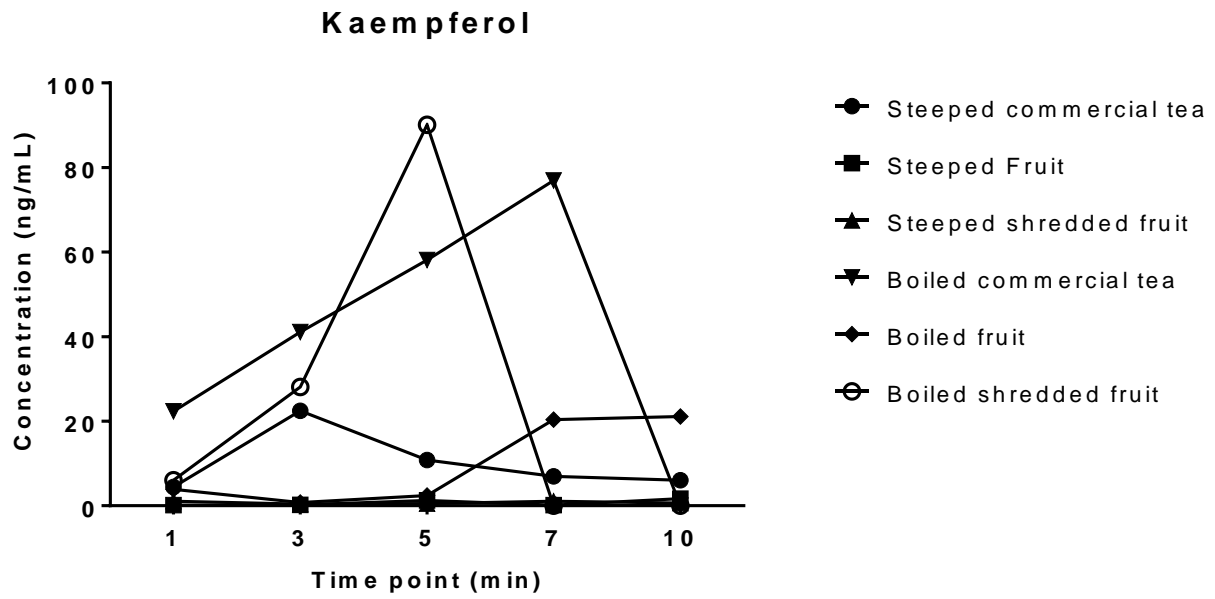


Figure 1. The content of phenolic molecules (ng/mL) in rosehip teas which were obtained with boiling and steeping in different time points. A. The content of quercetin, B. The content of kaempferol, C. The content of myricetin, and D. The content of ellagic acid.

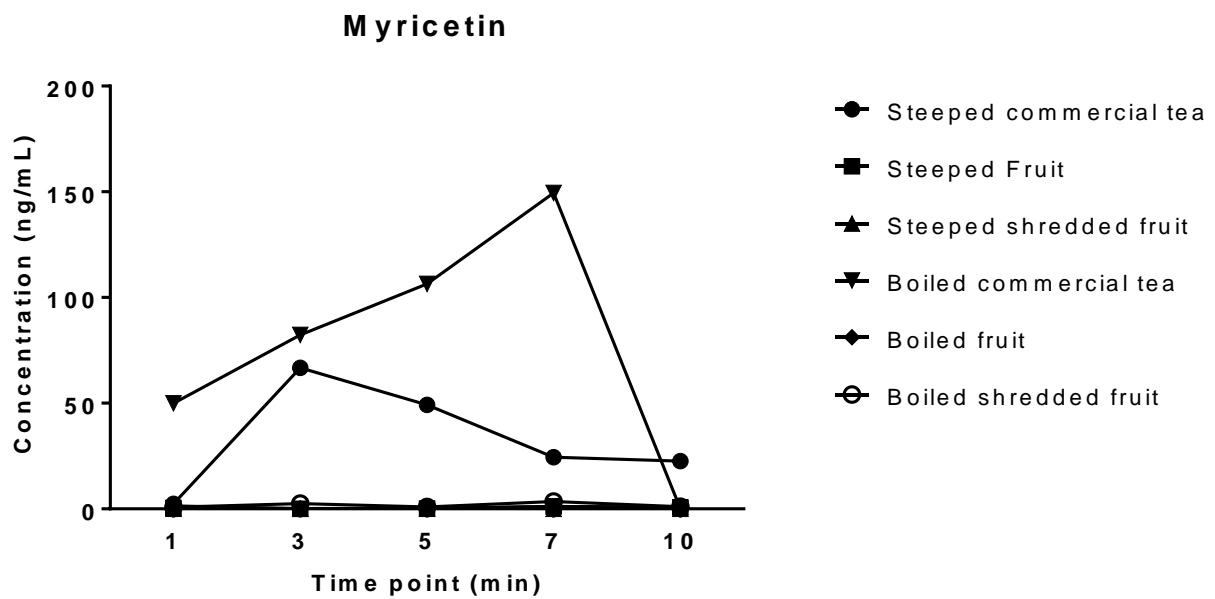
A.



B.



C.



D.

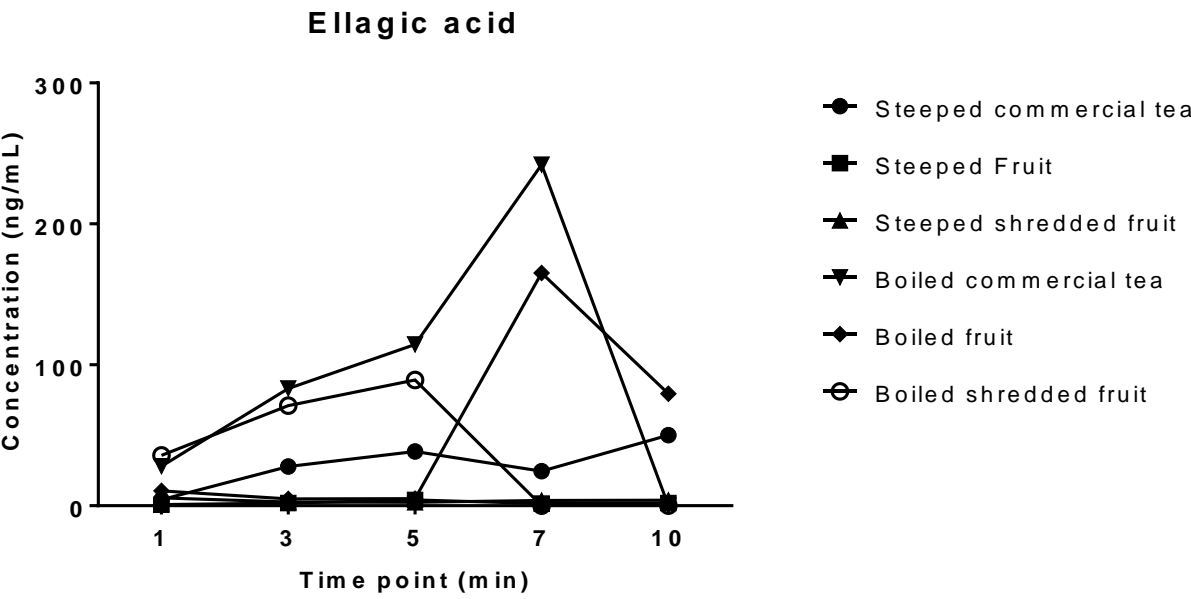
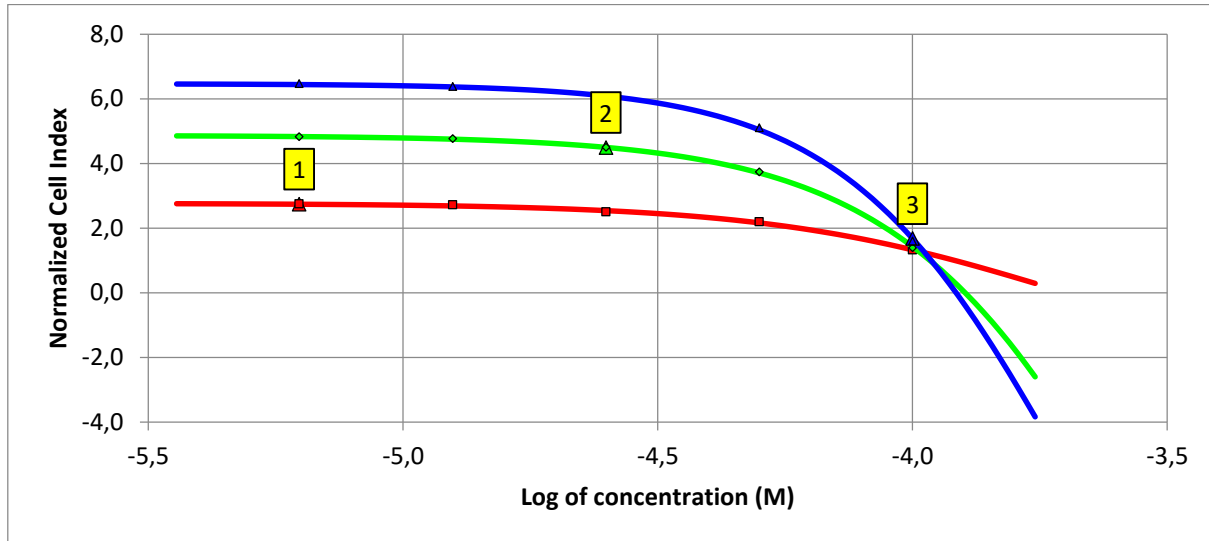
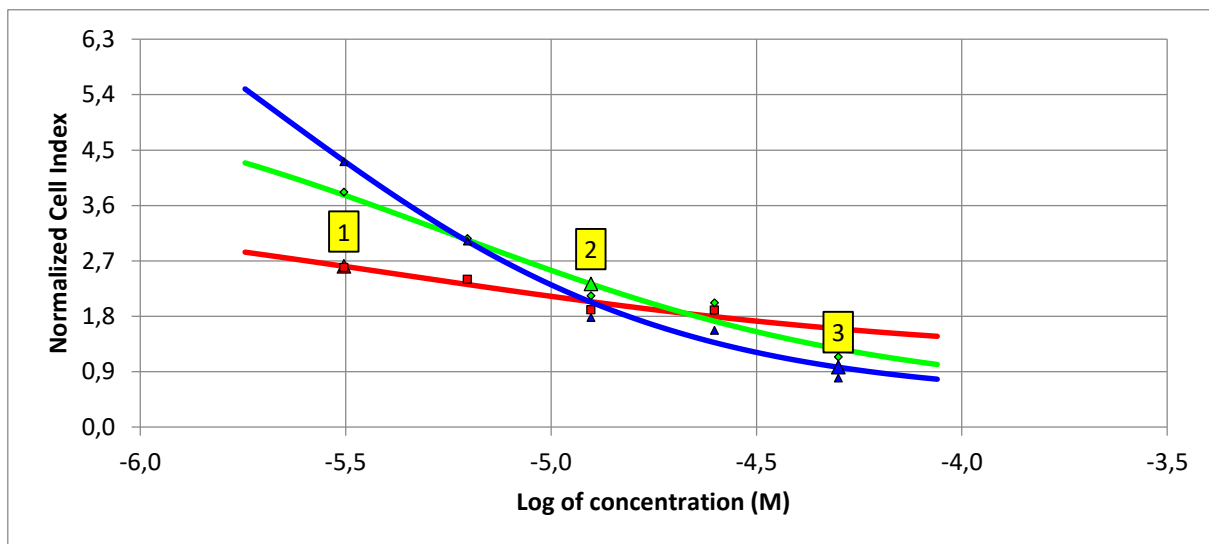


Figure 2. Real-time monitoring of cytotoxic effects of commercial phenolic compounds on VCaP cells. A. IC₅₀ curves of quercetin, B. IC₅₀ curves of kaempferol, C. IC₅₀ curves of myricetin, D. IC₅₀ curves of ellagic acid. (1; 24th h, 2; 48th h, and 3; 72nd h).

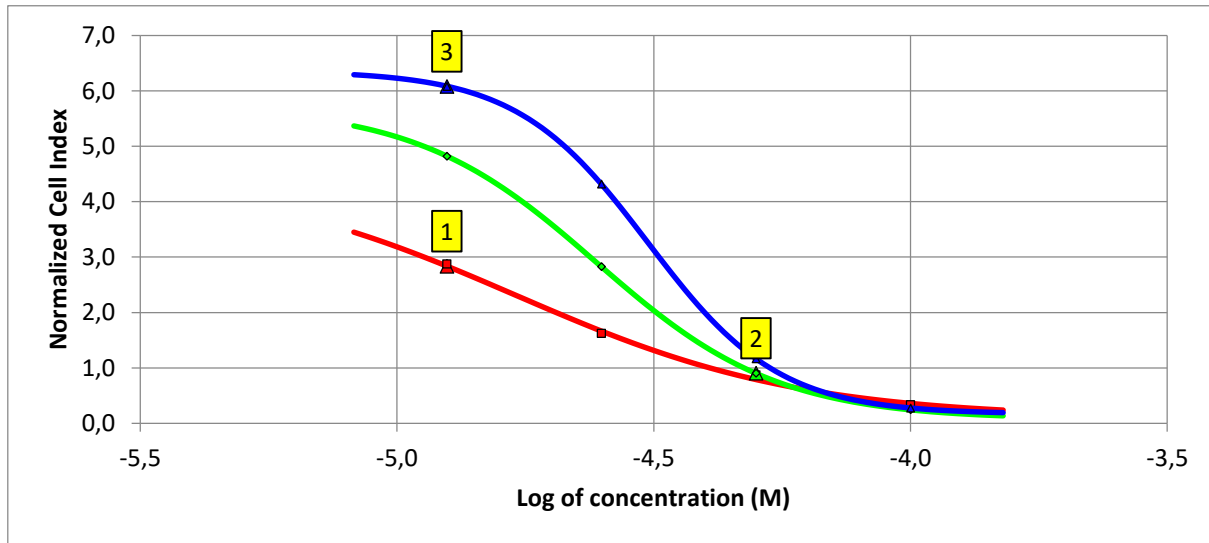
A.



B.



C.



D.

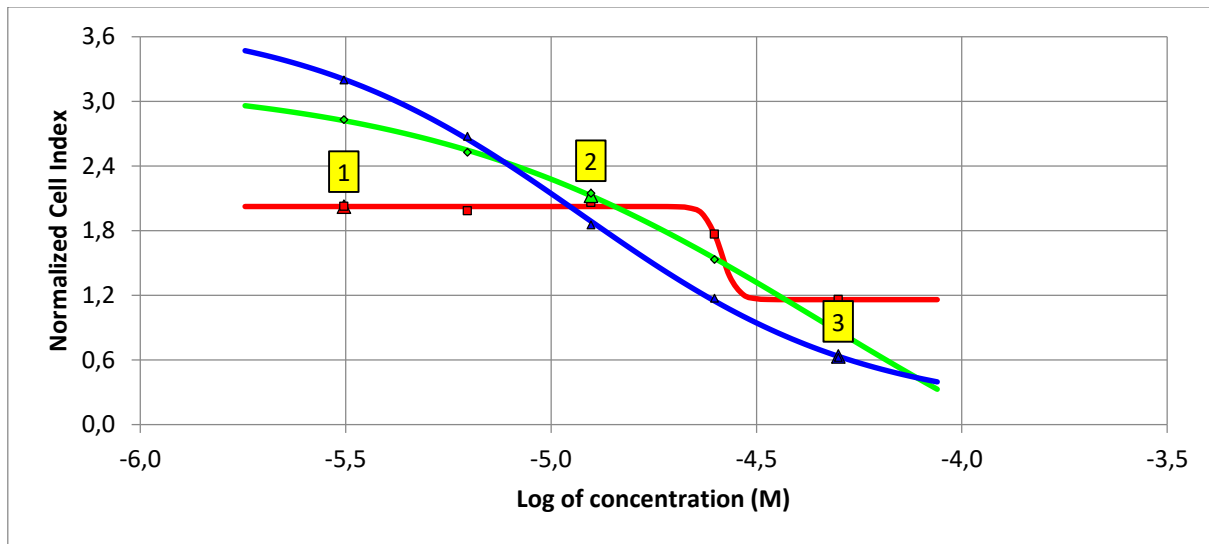
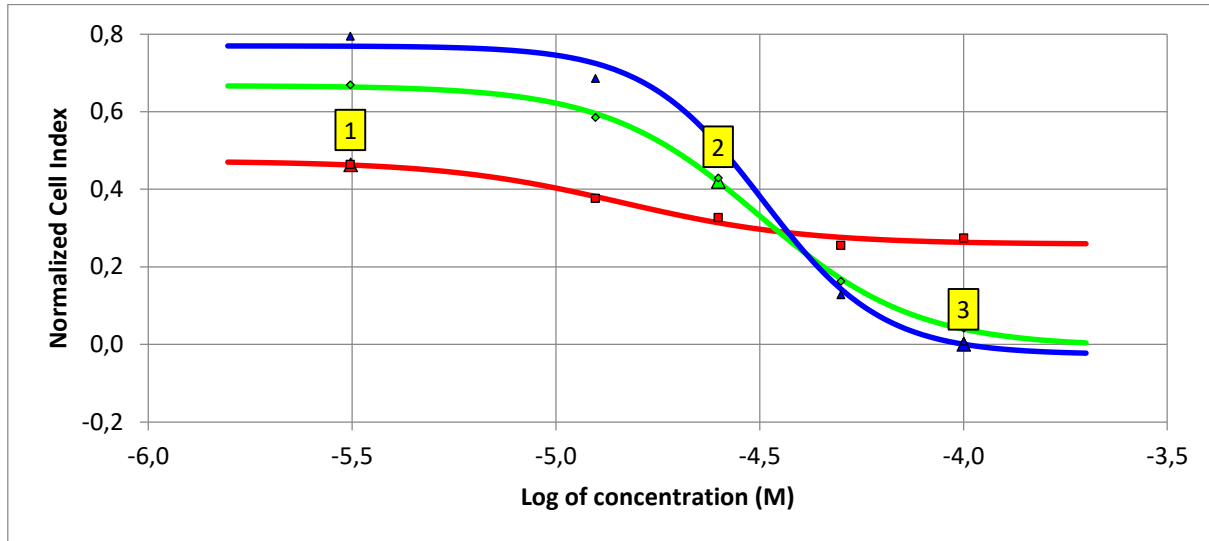
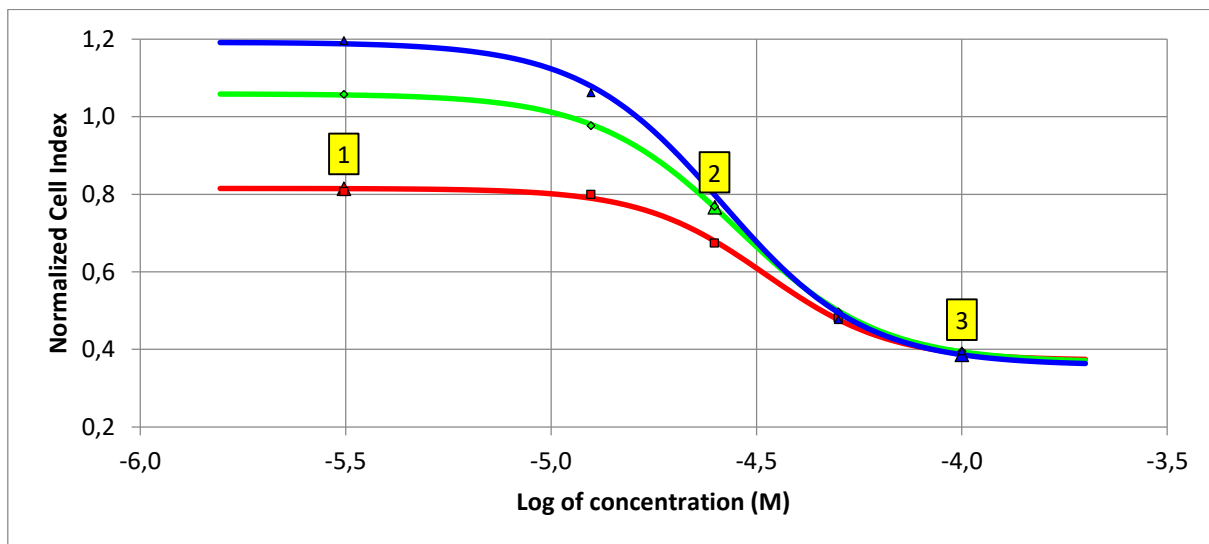


Figure 3. Real-time monitoring of cytotoxic effects of commercial phenolic compounds on LNCaP cells. A. IC₅₀ curves of quercetin, B. IC₅₀ curves of kaempferol, C. IC₅₀ curves of myricetin, D. IC₅₀ curves of ellagic acid. (1;24th h, 2;48th h, and 3;72nd h).

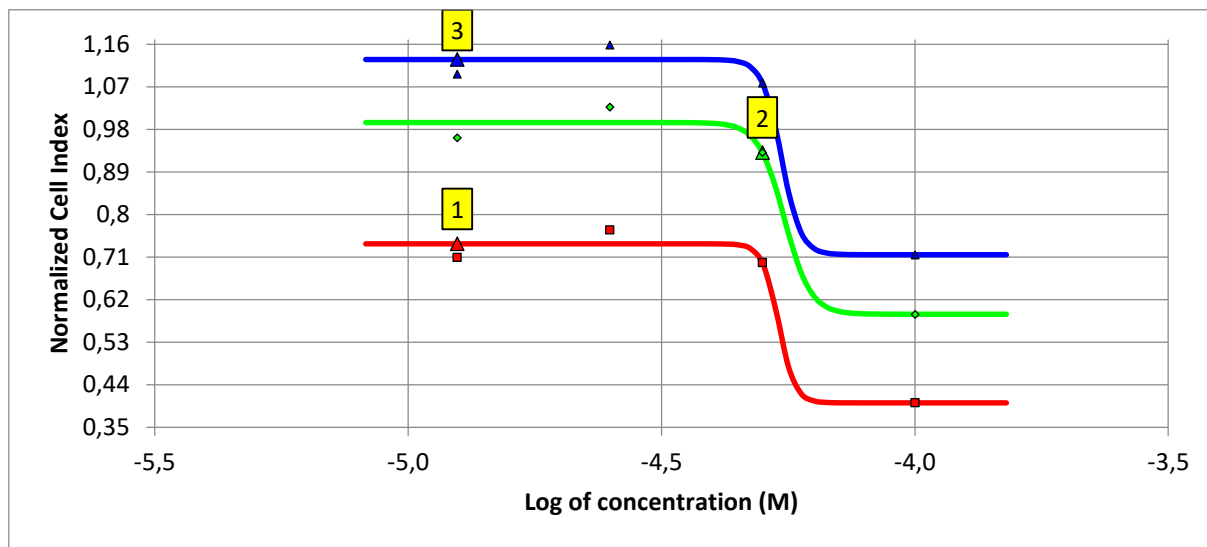
A.



B.



C.



D.

