

In this issue

Wanessa R. Melchert and Fábio R.P. Rocha

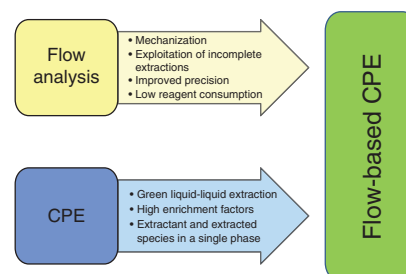
Cloud point extraction in flow-based systems

DOI 10.1515/revac-2015-0022

Rev Anal Chem 2016; 35(2): 41–52

Review: Flow-based CPE results in fast and greener extractions, with improved precision and lower reagent consumption and waste generation.

Keywords: flow analysis; green analytical chemistry; liquid-liquid extraction; preconcentration; separation.



Zorione Herrasti, Erica de la Serna, Gisela Ruiz-Vega and Eva Baldrich
Developing enhanced magneto-immunosensors based on low-cost screen-printed electrode devices

DOI 10.1515/revac-2016-0004

Rev Anal Chem 2016; 35(2): 53–85

Review: The combination of magnetic particles (MP) for target immunocapture and concentration and electrochemical detection at low-cost screen-printed electrodes (SPE) can provide extremely sensitive and specific immunosensors.

Keywords: electrochemical detection; electrochemical magneto-immunosensor; magnetic particle (MP); screen-printed electrode (SPE).

