

5 Supplementary material

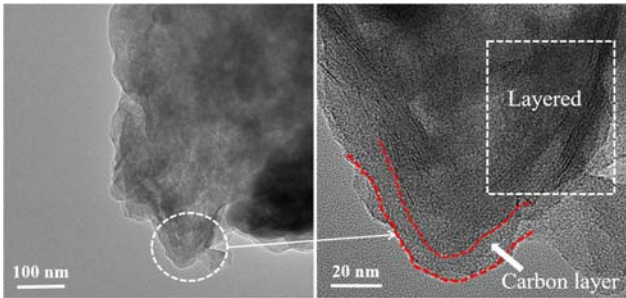


Figure S1: TEM images of Bent@C.

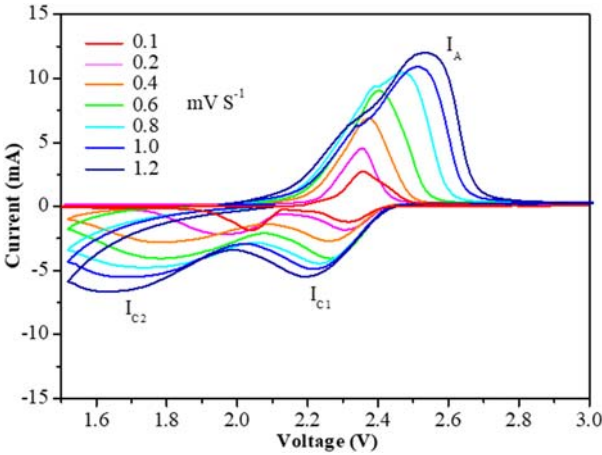


Figure S3: CV tests of Li-Bent/S electrode under different scanning rates ranging from 0.1 to 1.2 mV/s between 1.5 and 3.0 V (vs Li/Li⁺).

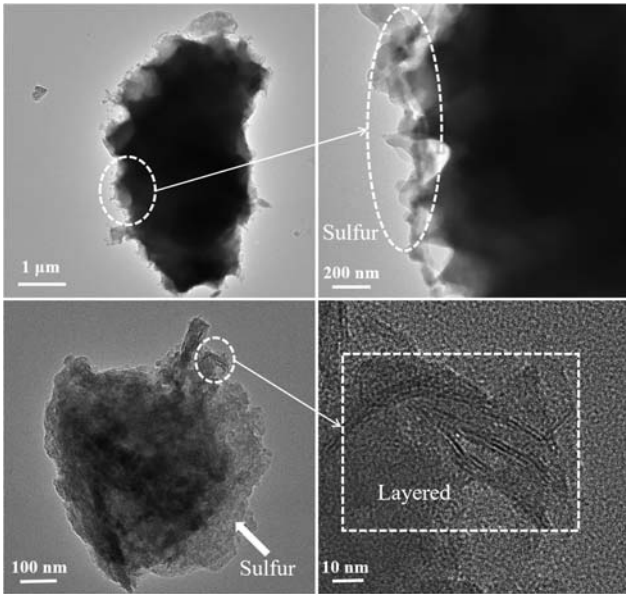


Figure S2: TEM images of S/Bent@C.

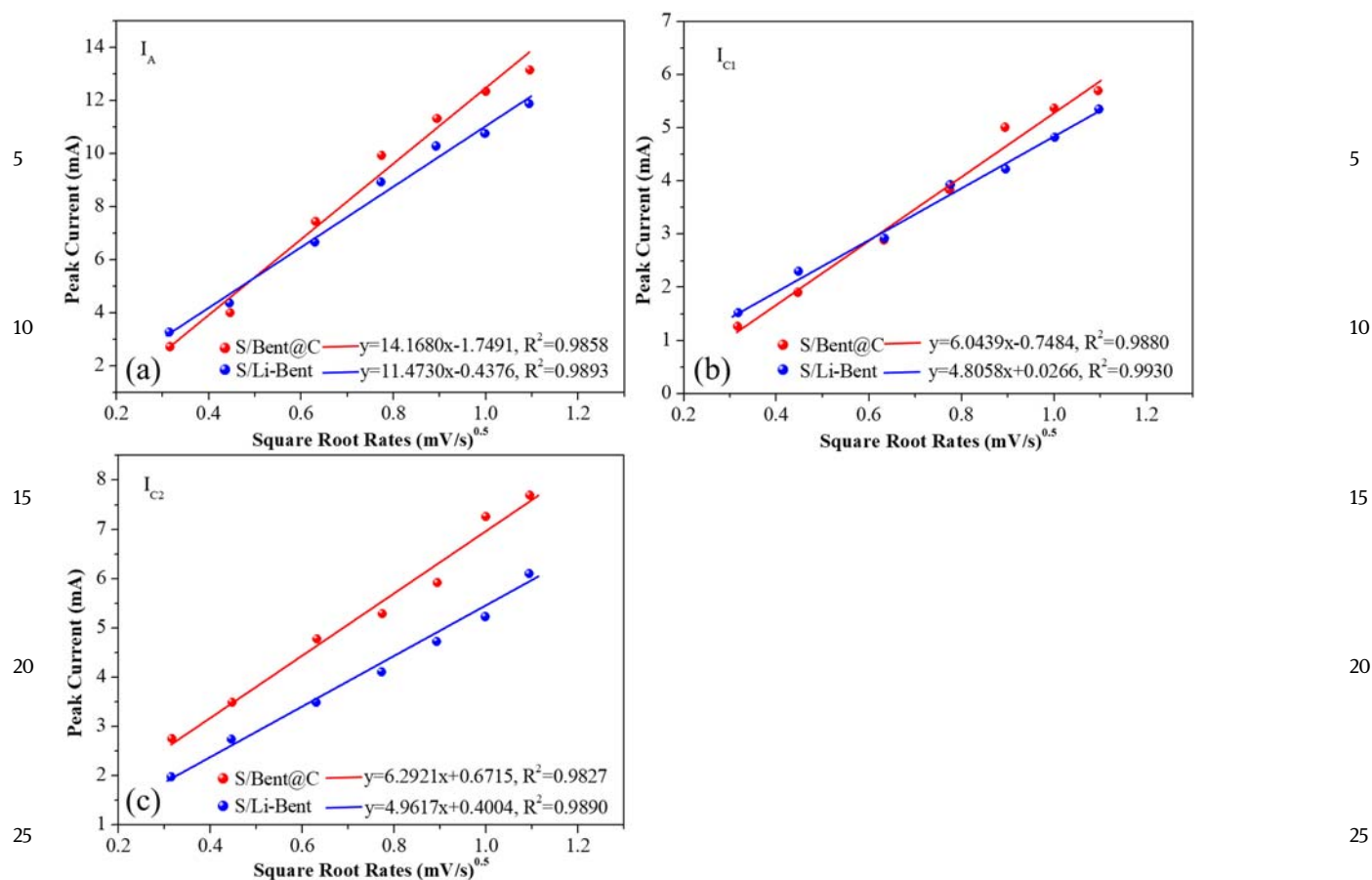


Figure S4: The correlation between peak current and the square root of the scan rates in (a) the anodic oxidation process (I_A), (b) first cathodic reduction process (I_{C1}) and (c) second cathodic reduction process (I_{C2}), respectively.

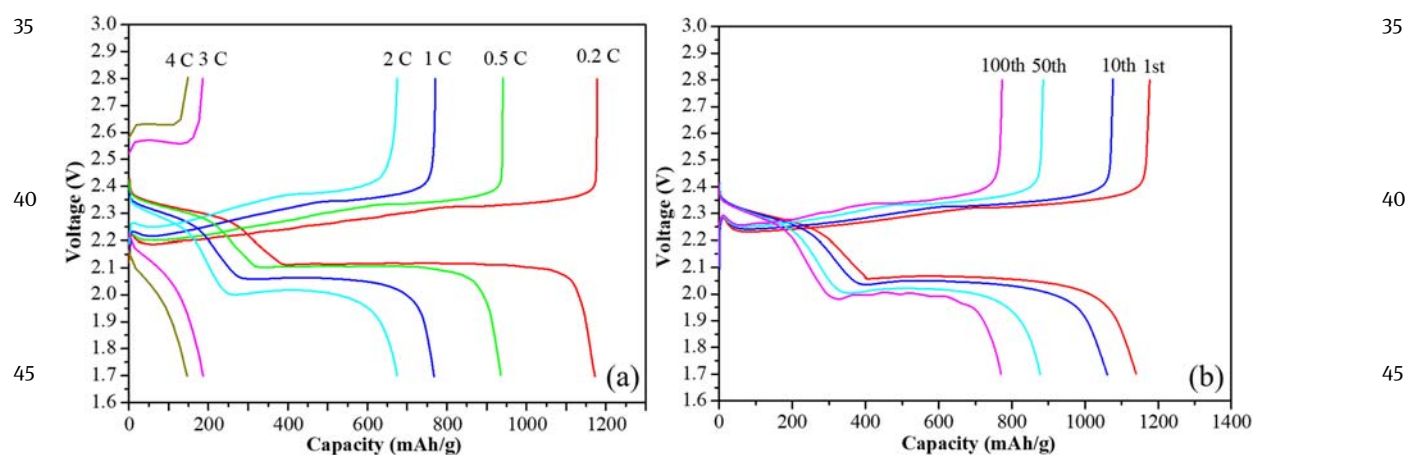


Figure S5: Galvanostatic charge/discharge profiles of S/Li-Bent electrodes at various C-rates with a sulfur loading of 1.2 mg cm⁻² (a), and at different cycles with a sulfur loading of 2 mg cm⁻² (b).

Table S1: Values of R_s , R_{SEI} , and R_{ct} for various Li–S cells

Electrode used in the Li–S cell	R_s (Ω)	R_{SEI} (Ω)	R_{ct} (Ω)
S/Bent@C	2.1	2.8	15.6
S/Li-Bent	4.3	19.615	39.29