

Supplementary material

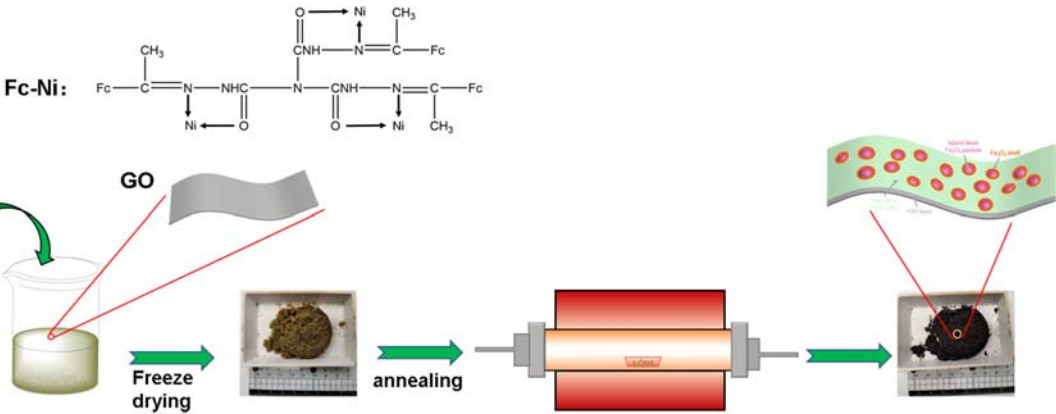


Figure S1: Schematic of the preparation process of McM/rGO.

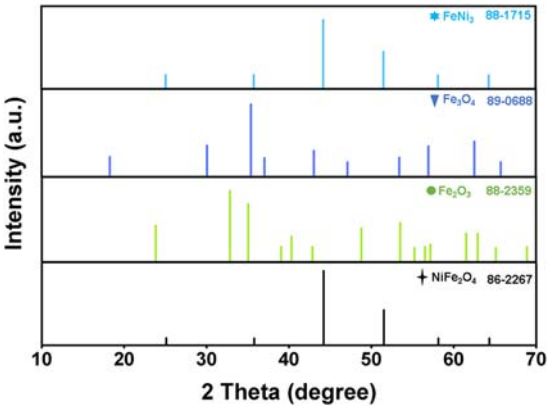


Figure S2: XRD patterns of FeNi₃, Fe₃O₄, Fe₂O₃, and NiFe₂O₄.

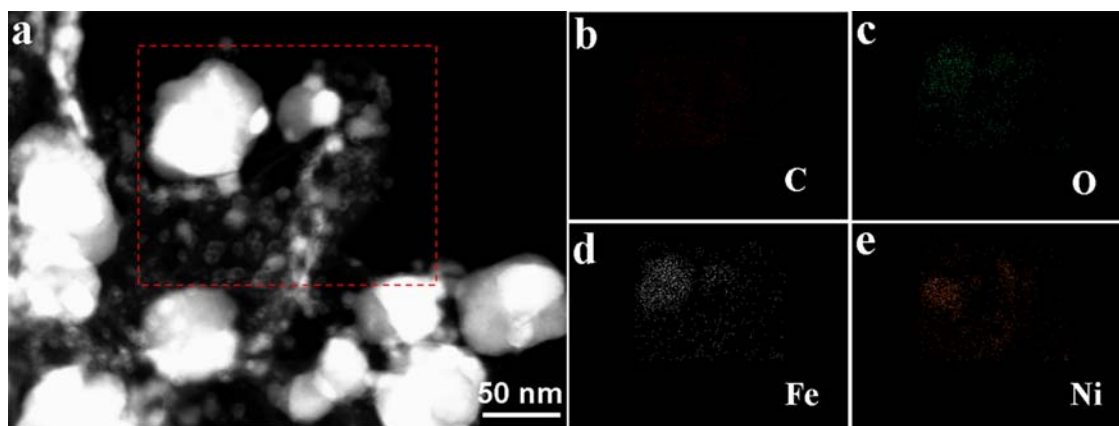


Figure S3: EDS mapping of McM@rGO-600.

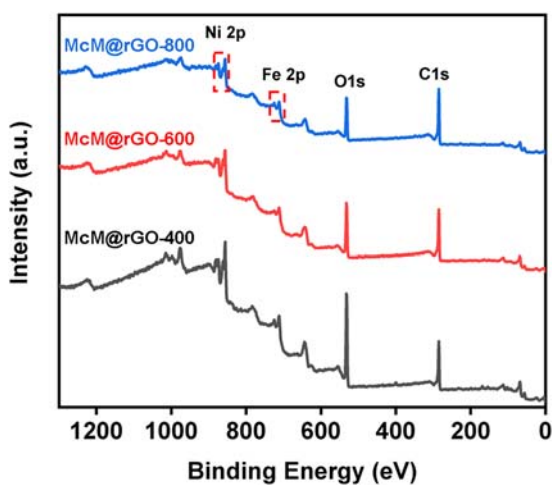


Figure S4: XPS curves of McM@rGO synthesized with different annealing temperatures.

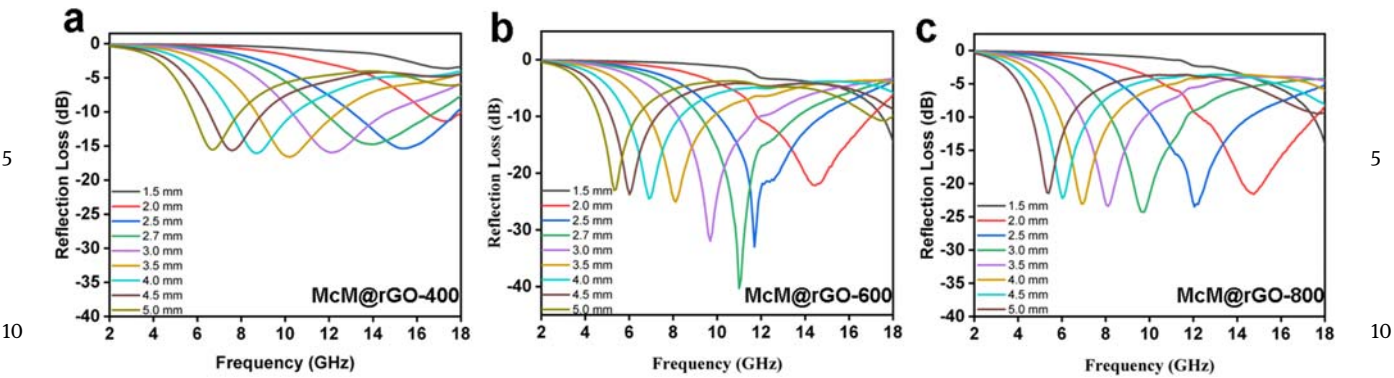


Figure S5: Reflection loss curves of McM@rGO synthesized with different annealing temperatures.