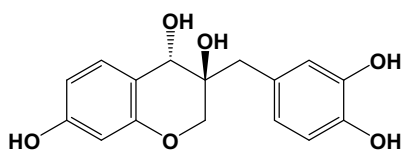
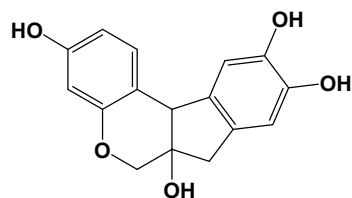


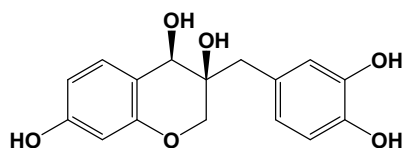
Supplementary material



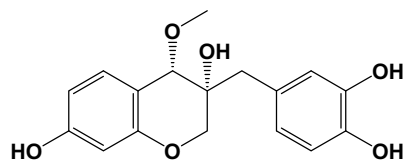
episappanol



brazilin



sappanol



4-O-methylsappanol

Figure S1: Chemical structures of characteristic peaks.

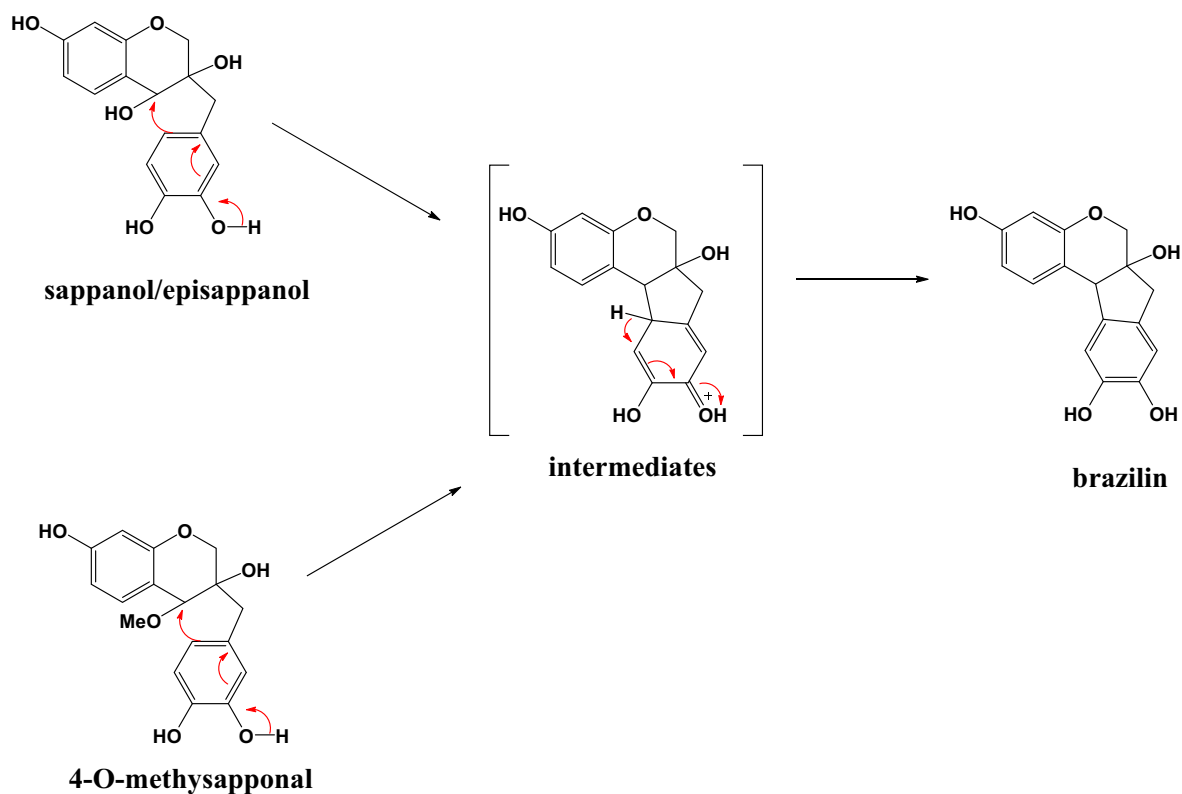


Figure S2: Possible conversion pathways of characteristic peaks.

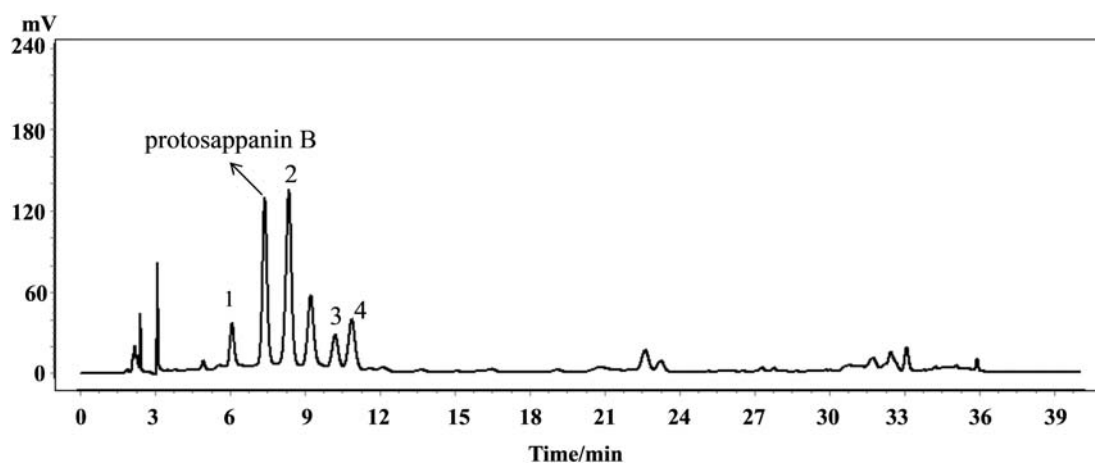


Figure S3: HPLC fingerprint of *Caesalpinia sappan* L. peak 1: episappanol; peak 2: brazilin; peak 3: sappanol; peak 4: 4-O-methylsappanol.