

# List of contributors

 <https://doi.org/10.1075/rmal.11.bio>

Pages vii–x of

**11**

**Innovative Qualitative Methodologies in Multilingual Literacy Development Research: Amplifying voices from immigrant, transnational, and refugee communities**

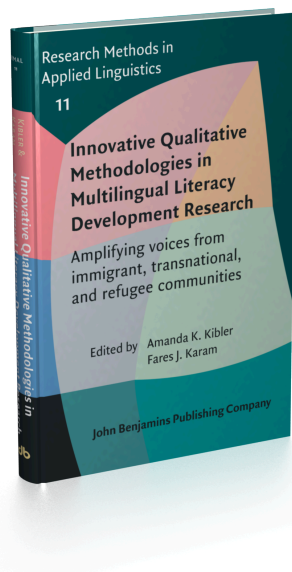
**Edited by Amanda K. Kibler and Fares J. Karam**

[Research Methods in Applied Linguistics, 11] 2025. ix, 268 pp.

© John Benjamins Publishing Company

This electronic file may not be altered in any way. For any reuse of this material written permission should be obtained from the publishers or through the Copyright Clearance Center (for USA: [www.copyright.com](http://www.copyright.com)).

For further information, please contact [rights@benjamins.nl](mailto:rights@benjamins.nl) or consult our website at [benjamins.com/rights](http://benjamins.com/rights)



John Benjamins Publishing Company

## List of contributors

**Melissa Adams Corral** is an Assistant Professor of Mathematics Education at the University of Texas — Río Grande Valley. She takes a community organizing stance in her work developing methodologies. Her research draws attention to the knowledge and educational experiences of Latinx children from multilingual communities.

**Fátima Andrade Martínez** is a PhD candidate in the University of California, Santa Barbara Department of Education. Fátima's work focuses on undocumented students' experiences in higher education institutions.

**Diana J. Arya** is an Associate Professor and Faculty Director in Education at the University of California, Santa Barbara. Within the framework of Community Based Literacies (CBL), Diana leads explorations with a K-20 multilingual community who collaboratively engage in researching, knowledge building, and communicating about local issues and interests.

**Maneka Deanna Brooks** is Dean and Professor at Portland State University's College of Education. An equity-focused leader, her research explores bilingualism, adolescent literacy, and course placement. By reimagining traditional practices, Dr. Brooks advocates for just, inclusive learning environments, emphasizing the transformative role of education in society.

**M. Sidury Christiansen** is an Associate Professor of Applied Linguistics at the University of Texas at San Antonio. Her research explores the intersection between digital literacy and language ideologies, identities and cultures among multilingual populations. She engages in long-term ethnographic and self-reflexive research in online and offline environments.

**Liv T. Dávila** is an Associate Professor at the University of Illinois at Urbana-Champaign. Her research engages with applied linguistics, literacy studies, and educational anthropology to analyze how students' languages and literacies shape and are shaped by learning contexts, as well as global phenomena including migration, racism and racialization.

**Sarah Gallo** is an Associate Professor of Language Education and Urban Social Justice Education at Rutgers University. Her research has brought attention to the ways that undocumentedness shapes the educational and languaging lives of elementary school-aged children, their families, and their teachers in Mexico and the United States.

**María Paula Ghiso** is a Professor of Literacy Education and Chair of the Department of Curriculum and Teaching at Teachers College, Columbia University. Her scholarship investigates literacy in multilingual and transnational contexts and community-based research methodologies. The latter is the subject of her co-authored book, *Methods for Community-Based Research*.

**Fares J. Karam** is an Associate Professor of Teaching English to Speakers of Other Languages (TESOL) in the College of Education and Human Development at the University of Nevada, Reno. His scholarship focuses on the language and literacy development of students from immigrant and refugee backgrounds in addition to TESOL teacher education.

**Amanda K. Kibler** is a Professor in the College of Education at Oregon State University. Her scholarship focuses on the interactional and ecological contexts through which multilingual children and adolescents from immigrant backgrounds develop language and literacy expertise, as well as the ways in which teachers collaborate and use inquiry to facilitate these processes.

**Jinhee Kim** is an Associate Professor in the Department of Elementary and Early Childhood Education at Kennesaw State University. Her research areas include Asian/Asian American children, highly mobile children such as children experiencing homelessness in teacher education, notions of home in the school curriculum, and culturally sustaining research methods.

**Hsiao-Chin Kuo** is an Associate Professor of Literacy Education at Northeastern Illinois University. Dr. Kuo teaches teacher preparation classes to both pre- and in-service teachers, with a special focus on supporting culturally and linguistically diverse learners. Her research interests include multimodal literacies, school-home-community partnerships, and multimodal/visual art-based research.

**Lizeth Lizarraga** is a Ph.D. student in the Education Policy and Planning program at the University of Texas at Austin. Her research interests focus on educational equity and opportunity issues for culturally and linguistically diverse students in the K-12 education system. Lizeth is particularly interested in Latinx family access, collaboration, and advocacy regarding special education.

**Andrew Maul** is an Associate Professor in the Department of Education at the University of California, Santa Barbara. Andrew's work focuses on the conceptual foundations of research methodology in the human sciences, and in particular on the theory and practice of educational and psychological measurement.

**Jim McKinley**, SFHEA, is a Professor of Applied Linguistics at University College London. He has taught in higher education in the UK, Japan, Australia, and Uganda, as well as US schools. His research targets implications of internationalization for academic writing and higher education studies. He is an Editor-in-Chief of the journal *System*.

**Sohyun Meacham** is an Associate Professor in the Department of Curriculum and Instruction at the University of Northern Iowa. Her research interests center around children's meaning-making processes and teachers' dialogic intelligence to enhance these processes in classrooms. She advocates for diversity and social justice using multicultural children's literature in teacher education.

**Valerie Meier** is the Assistant Director of the McEnroe Reading and Language Arts Clinic at the University of California, Santa Barbara. Within the framework of Community Based Literacies, Valerie supports literacy programs that provide space for younger and older co-learners to share their interests, creativity, experiences, and multilingual expertise.

**Rachel Salas** is an Associate Professor of Literacy Studies at the University of Nevada, Reno, where she investigates intersections of STEM, literacy, language, and race in education. Her research focuses on enhancing the disciplinary literacy skills of marginalized students through robotics. She founded the Wolf Pack Bots/Lobos Robóticos program and collaborates with diverse communities through robotics-based educational initiatives.

**Sanela Sprečić**, a doctoral student at Western Michigan University in Education and Human Development (ESL focus), holds a Master's in Educational Leadership. With 27 years of experience, she leads the EL Program at Kentwood Public Schools. A 2021–2022 ESEA Distinguished Schools Award recipient, her interests include instruction and program improvements.

**Amy Stornaiuolo** is an Associate Professor of Literacy Education at the University of Pennsylvania. Her research investigates people's digital literacy practices, drawing on digital methods to trace literacies on the move across formal and informal cross-cultural spaces and broader socio-technical systems.

**Zhongfeng Tian** is an Assistant Professor of Bilingual Education at Rutgers University — Newark. His research interests include translanguaging, TESOL, bilingual education, and teacher education, utilizing participatory qualitative and self-reflexive methods. He also serves on the editorial boards of *TESOL Quarterly* and the *International Multilingual Research Journal*.

**Su-Jeong Wee** is an Associate Professor in the Department of Child and Family Studies at California State University, Los Angeles. Focusing on children's early childhood development, she critically analyze children's multicultural picturebooks, emphasizing the experiences of minoritized populations, intersectionality, cultures, diversity, and social justice.

